

MONTHLY MEMBERSHIP PROGRESS REPORT

LOCATION INDIA

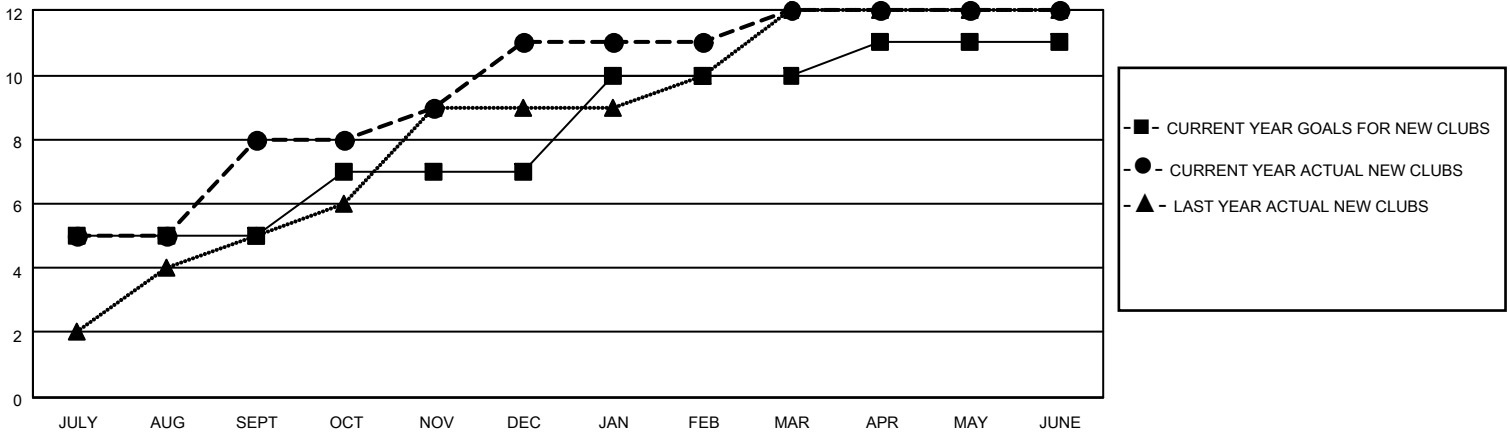
District 317 D

Results as of: 6/30/2023

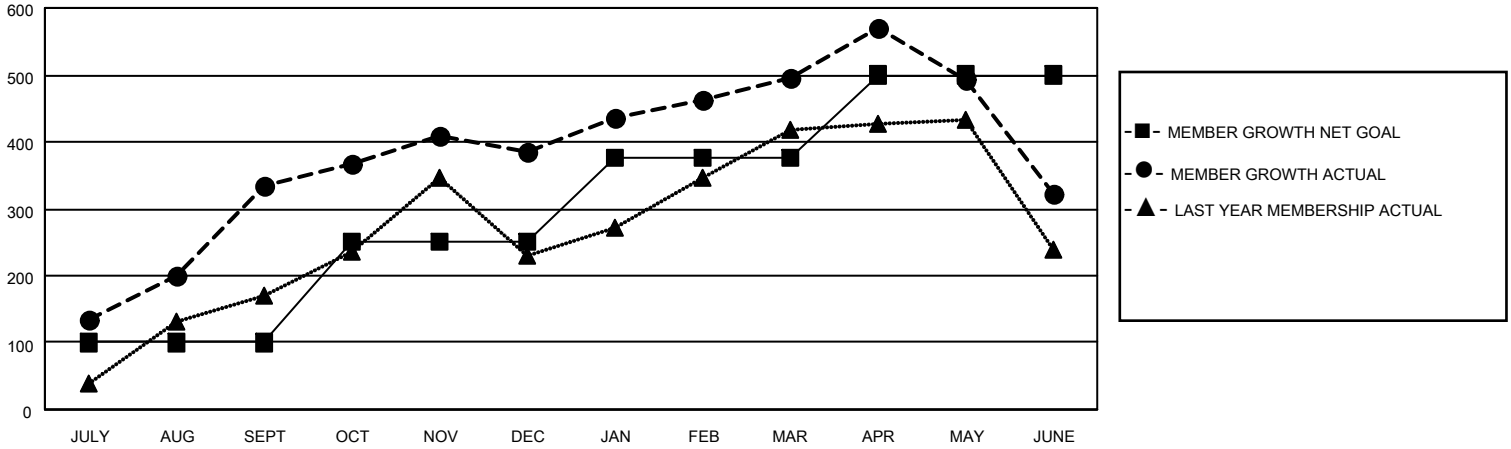
Clubs			
RESULTS FOR 2022-2023			
QUARTER	NEW CLUB GOAL	NEW CLUBS	DROPPED CLUBS
JULY/AUG/SEPT	5	8	1
OCT/NOV/DEC	2	3	0
JAN/FEB/MAR	3	1	2
APR/MAY/JUNE	1	0	1

Members			
RESULTS FOR 2022-2023			
QUARTER	MEMBER GROWTH NET GOAL	MEMBER GROWTH ACTUAL	DROPPED MEMBERS ACTUAL (including transfers)
JULY/AUG/SEPT	100	394	47
OCT/NOV/DEC	150	174	123
JAN/FEB/MAR	125	206	82
APR/MAY/JUNE	125	233	401

GOALS AND ACTUAL NEW CLUBS CUMULATIVE



GOALS AND ACTUAL MEMBERS CUMULATIVE



DROPPED CLUBS: 4

102 CLUBS OF 121 ADDED 1 OR MORE NEW MEMBERS

GENDER DISTRIBUTION

MALE	3,267 (75.85%)
FEMALE	1,040 (24.15%)
NON BINARY	0 (0.00%)
PREFER NOT TO ANSWER	0 (0.00%)

DROPPED MEMBERS

DECEASED	18
CLUB CANCELLED	127
OTHER	508
TOTAL	653

[CLICK HERE FOR CUMULATIVE MEMBERSHIP DATA](#)

TOTAL FAMILY UNIT MEMBERS 1,539

FAMILY MEMBERS PAYING HALF DUES 790